



# **STOCKPORT SCHOOL**

## **Safeguarding Policy**

**2024-25**

## Contents

SAFEGUARDING DEFINITION: .....	5
CHILD PROTECTION DEFINITION: .....	5
RATIONALE: .....	5
<b>SAFEGUARDING – OUR APPROACH</b> .....	<b>6</b>
INTRODUCTION.....	6
INFORMATION SHARING AND CONFIDENTIALITY: .....	7
PURPOSE:.....	7
LANGUAGE:.....	8
CONTENTS: .....	8
PREVENTION: .....	9
COMPLEX SAFEGUARDING: .....	11
CHILD SEXUAL EXPLOITATION (CSE):.....	12
CHILDREN AND YOUNG PEOPLE WHO HARM OTHERS (ALSO REFERRED TO AS PEER-ON-PEER ABUSE):	12
SEXUAL VIOLENCE AND SEXUAL HARASSMENT:.....	13
CONTEXTUAL SAFEGUARDING:.....	14
ROLES AND RESPONSIBILITIES: .....	14
THE USE OF ‘REASONABLE FORCE’: .....	18
SAFER USE OF THE INTERNET AND DIGITAL TECHNOLOGY.....	18
USE OF MOBILE PHONES:.....	18
WORK MOBILE PHONES: .....	19
PERSONAL MOBILE PHONES:.....	19
CAMERAS: PHOTOGRAPHY AND IMAGES: .....	19
The sharing of nude or semi-nude pictures (SOMETIMES KNOWN AS SEXTING).....	20
What to do if an incident comes to your attention .....	20
ONLINE HARMS:.....	21
CYBERCRIME: .....	21
CYBER-BULLYING:.....	21
ONLINE & GAMING SAFETY: .....	21
MENTAL HEALTH AND WELLBEING:.....	22
KCSIE 2024 reminds us of the importance of understanding emotional wellbeing and mental health and the relevance of these to the safeguarding agenda. ....	22
PROCEDURES AND RECORD-KEEPING:.....	22
SUPERVISION AND SUPPORT .....	23
WHISTLEBLOWING/CONFIDENTIAL REPORTING .....	24
CHILDREN WHO ARE ABSENT FROM EDUCATION:.....	24
SUPPORTING VULNERABLE PUPILS.....	26

CHILDREN WITH SPECIAL NEEDS AND DISABILITIES: .....	26
EARLY IDENTIFICATION RECOGNISING AND RESPONDING TO SAFEGUARDING NEEDS.....	26
EXTREMISM AND RADICALISATION: .....	28
OTHER SPECIFIC SAFEGUARDING ISSUES: .....	28
Domestic abuse/violence .....	28
Honour Based Violence (HBV) including Forced Marriage (FM):.....	28
Female Genital Mutilation (FGM): .....	29
Breast Ironing: .....	29
<b>THE EXPLOITATION OF CHILDREN:</b> .....	29
SERIOUS YOUTH VIOLENCE: .....	29
EXCEPTIONAL CIRCUMSTANCES (CLOSURES, PARTIAL CLOSURES, HOME LEARNING):.....	30
SITE SAFETY & SECURITY: .....	30
SAFER RECRUITMENT AND SAFER WORKING PRACTICE: .....	30
GOVERNING BODY DUTIES & RESPONSIBILITIES: .....	31
OTHER RELATED POLICIES: .....	32
APPENDICES.....	34
POSSIBLE INDICATORS OF ABUSE: .....	40
INFORMATION YOU MAY BE ASKED TO PROVIDE .....	41
INFORMATION & TELEPHONE NUMBERS FOR CONSULTATION AND REFERRAL .....	41
Children’s Services- child protection referral .....	41
Advice is available from:.....	41
The LADO:.....	42



## Stockport School

### Safeguarding Policy

POLICY AUTHOR	JUDE NORMAN, ASSOCIATE ASSISTANT HEADTEACHER
SIGNED:	CHAIR OF GOVERNORS & SAFEGUARDING GOVERNOR
REVIEWED BY GOVERNING BODY:	SEPTEMBER 2024

At Stockport School the following members of the school community hold the following positions:

Designated Safeguarding Lead	Deputy Designated Safeguarding Lead	Safeguarding Governor
Ian Irwin Jude Norman	John Warren Hilary Thorley	Michelle Beecroft

Concerns or allegations about a member of staff or volunteer should be shared with:

The Headteacher	Associate Assistant Headteacher / Senior Deputy Headteacher (in the absence of the Headteacher)	Chair of Governors (in the event of an allegation against the Headteacher)
Ian Irwin	Jude Norman / John Warren	Peter Maloney

HR and legal support and advice is provided by: Employee Relations, SMBC

## OUTLINE:

Safeguarding and promoting the welfare of children and young people is everyone's responsibility. Everyone who comes into contact with children, their families and carers have a role to play in safeguarding them and promoting their welfare. In order to fulfil this responsibility effectively, all professionals should make sure their approach is child-centred. This means that they should consider, at all times, what is in the best interests of the child.

No single professional can have a full picture of a child's needs and circumstances. If children and families are to receive the right help at the right time, everyone who comes into contact with them has a role to play in identifying concerns, sharing information and taking prompt and restorative action. In line with this understanding, any adult working or volunteering in the school community has a responsibility to recognise when a child or young person may be in need or be vulnerable in some way, and to respond to this recognition in a timely and appropriate way.

## SAFEGUARDING DEFINITION:

Safeguarding and promoting the welfare of children is defined for the purposes of this guidance as:

- providing help and support to meet the needs of children as soon as problems emerge
- protecting children from maltreatment, whether that is within or outside the home, including online
- preventing impairment of children's mental and physical health or development
- ensuring that children grow up in circumstances consistent with the provision of safe and effective care
- promoting the upbringing of children with their birth parents, or otherwise their family network through a kinship care arrangement, whenever possible and where this is in the best interests of the children
- taking action to enable all children to have the best outcomes in line with the outcomes set out in the Children's Social Care National Framework

*("Working Together to Safeguarding Children" 2023)*

## CHILD PROTECTION DEFINITION:

Child Protection is a part of the safeguarding agenda. It refers to the action that is required to be undertaken to protect children who are suffering, or are likely to suffer, significant harm.

## **THIS POLICY ENCOMPASSES CHILD PROTECTION.**

## RATIONALE:

At *Stockport School* we recognise the responsibility we have under Section 175/157 of the Education and Inspections Act 2002, to have arrangements for safeguarding and promoting the welfare of children. The Governing Body approve the S175/157 return to the LA on a yearly basis. This policy demonstrates our commitment and compliance with safeguarding legislation.

Staff and volunteers working in our school have a crucial role to play in noticing indicators of possible abuse, neglect or exploitation and referring them to the correct persons or services for support and intervention. Everyone working or volunteering at this school is trained to recognise signs of concern and in line with this policy, must report concerns following school and local authority procedures.

Staff and volunteers are updated on safeguarding issues frequently across the year by John Warren during staff meetings and bespoke training. These updates include learning from serious case reviews and local learning reviews on how to improve practice to prevent children from harm.

## **SAFEGUARDING – OUR APPROACH**

---

### **INTRODUCTION**

Stockport School recognises our statutory responsibility to safeguard and promote the welfare of all children. Safeguarding is everybody's responsibility and all those directly connected (staff, volunteers, governors, leaders, parents, families, and students) are an important part of the wider safeguarding system for children and have an essential role to play in making our school a safe and secure setting, our students at the centre of all we do.

We believe that the best interests of children always come first. All children (defined as those up to the age of 18) have a right to be heard and to have their wishes and feelings taken into account and all children regardless of age, gender, ability, culture, race, language, religion or sexual identity or orientation, have equal rights to protection.

When concerned about the welfare of a child, staff will always act in the best interests of the child and if any member of our community has a safeguarding concern about any child or adult, they should act and act immediately.

Stockport School works continuously to build and maintain an effective culture of safeguarding. We seek to provide an environment within school that will help children to be safe and to feel safe. In our school children are respected and are encouraged to talk openly. We will ensure children's wishes and feelings are taken into account when determining what safeguarding action to take and what services to provide.

Our core safeguarding principles are:

- **Prevention:** positive, supportive, safe culture, curriculum and pastoral opportunities for children, safer recruitment procedures.
- **Protection:** following the agreed procedures, ensuring all staff are trained and supported to recognise and respond appropriately and sensitively to safeguarding concerns.
- **Partnership:** to ensure timely, appropriate communications and actions are undertaken by collaborating with the right people at the right time where there are safeguarding concerns.
- **Support:** for all pupils/students, parents and staff, and where appropriate specific interventions are required for those who may be at risk of harm

The procedures contained in this policy apply to all staff, governors, temporary and partner agency staff and volunteers. This policy is consistent with the statutory guidance set out in KCSIE 2024.

This policy is implemented in accordance with our compliance with the statutory guidance from the Department for Education, 'Keeping Children Safe in Education' 2024 (KCSIE) which requires individual school/colleges and colleges to have an effective child protection policy.

This policy has been developed in accordance with the principles established by the Children Acts 1989 and 2004 and related guidance. As part of our commitment to and compliance with safeguarding legislation and guidance; we also refer to:

- Working Together to Safeguard Children 2018 (WTSC)
- Ofsted: Education Inspection Framework'
- Framework for the Assessment of Children in Need and their Families 2000
- The Education Act 2002
- Education and Inspections Act 2006
- The Education (Independent School/college Standards) Regulations 2014
- The Non-Maintained Special School/colleges (England) Regulations 2015
- The Human Rights Act 1998
- The Equality Act 2010 (including the Public Sector Equality Duty)
- Staff Code of Conduct
- Staff use of mobile phones and Social Media Policy
- E-Safety (Acceptable Use) Policy
- Prevent Policy

#### INFORMATION SHARING AND CONFIDENTIALITY:

We take data handling and information sharing seriously. School staff have received appropriate training in relation to information sharing and confidentiality. We operate under the guidance of the Stockport Local Authority Data Protection Officer (DPO) and the specialist service which we buy-back into, as required by the General Data Protection Regulations (GDPR) to ensure that our school is compliance with confidentiality and information sharing requirements.

Sharing information enables practitioners and agencies to identify and provide appropriate services that safeguard and promote the welfare of children.

Where we share information in relation to safeguarding or a child protection matter, we follow local and national guidance, we pay particular regard to information sharing advice for practitioners in safeguarding services and Data Protection Toolkit for Schools.

#### PURPOSE:

The purpose of the policy is to ensure that the welfare of children is understood and promoted at all times. In this school we understand that the welfare of the child is paramount.

We strive to ensure that all children regardless of their age, gender, ability, culture, race, language, religion or sexual identity are protected from harm in all its forms. All staff and volunteers have an equal responsibility to act on concerns, suspicions or disclosures that lead them to suspect or understand a child may be at risk of harm.

As part of our duty of care we also work to ensure that pupils and staff involved in safeguarding and child protection issues receive appropriate support.

In line with Keeping Children Safe in Education 2024 we work with a range of partners and adhere to local practice guidance supported by The Stockport Safeguarding Children Partnership.

All staff, volunteers and sessional workers are required to adhere to our Code of Conduct and Safer Working Practice Guidance (including the use of ICT and social media). All staff, volunteers and sessional workers understand what to do if there are concerns or allegations about any adult working or volunteering in our school during or outside of the normal school day.

**The procedures contained in this policy apply to all staff, volunteers, sessional workers, students, agency staff or anyone working** on behalf of Stockport School. We expect that this policy takes primacy over other agency policies when work is being delivered on this site and/or on our behalf, as we maintain a duty of care to all in our school community. Any expected exception to this must be named and negotiated ahead of work being undertaken.

Any parties hiring our facilities should also refer to safeguarding clauses in our hire agreement, and also note that in line with KCSiE 2024, we will ask for policies to be shared, and report any issues to the LA/LADO where appropriate.

#### LANGUAGE:

Safeguarding and promoting the welfare of children refers to the process of protecting children from maltreatment, preventing the impairment of children's health or development, ensuring that children are growing up in circumstances consistent with the provision of safe and effective care and taking action to enable all children to have the best life chances.

Early Help refers to mechanisms providing support as soon as a problem emerges at any point in a child's life, from the foundation years through to the teenage years.

Child Protection refers to the activity undertaken to protect specific children who are suffering, or are likely to suffer, significant harm.

Staff refers to all those working for or on behalf of the School in either a paid or voluntary capacity and will be used from this point on in this document.

Child refers to all children and young people who have not yet reached the age of 18.

Parent refers to birth parents and other adults who are in a parenting role including: step-parents, foster parents, carers and adoptive parents.

#### CONTENTS:

This policy has been divided into four key areas:

- Prevention
- Procedures and Record Keeping
- Additional information and sources of support
- Safer Recruitment



Additional materials are referenced or provided in the Appendices.

Detailed procedural guidance and additional references are available to all staff and governors here- [Greater Manchester Safeguarding Procedures](#)

### PREVENTION:

We will establish and maintain an ethos where:

Children feel safe and secure in an environment which allows them to learn and develop on a journey to achieving their full potential. We will educate and support our children in an inclusive, supportive non-judgemental environment.

Children understand that there are adults in the school whom they can talk to if worried, scared or facing difficulty. We will work hard to be a restorative staff team who actively listen and respond.

Staff development and awareness in respect of safeguarding is given the highest priority across the school to ensure we all fully understand and implement the national and local agenda. All our staff and volunteers are required to read Keeping Children Safe in Education (KCSIE) and Safer Working Practice. All staff are required to undertake annual safeguarding training and update training in line with KCSIE 2024.

We deliver a broad, balanced and age appropriate PSHE (Personal, Social, Health & Economic) Education Programme, where children and young people acquire the knowledge, understanding and skills they need to manage their lives, now and in the future. It will support them to manage and assess risk effectively and develop the skills to recognise healthy and unhealthy relationships (both online and in the physical world); and where to find sources of support.

Children are supported in recognising risks in various forms including on the internet. They understand what kind of physical and virtual contact is acceptable and can recognise inappropriate pressure from others, including that which threatens their personal safety and well-being and give them strategies to counter this.

Staff feel empowered to share safeguarding concerns in a swift and timely way bringing them to the attention of the Designated Safeguarding Lead (DSL) and/ or the Head Teacher. Accepting that safeguarding is the responsibility of all in our community, staff feel able to ask safeguarding questions and receive appropriate feedback following up on concerns as part of this shared responsibility to children.

Emerging issues and themes are proactively addressed and fed back to the Local Authority (LA) and Stockport Safeguarding Children Partnership (SSCP), via the Senior Advisor for Safeguarding in Education (SASE) to ensure a multi-agency awareness and that strategies are developed.

There is a clear approach to substance misuse (drugs and alcohol). Any issues of drugs and substance misuse are recorded and there are strategies to educate children appropriately delivered throughout the school and curriculum.

We use the mechanisms and services available to understand the range of issues which may make a child vulnerable and ensure children and young people receive the most appropriate support or referral and access to other provision; actively supporting multi agency planning for those children and, in doing so, providing information about the 'voice of the child' and the child's personal experiences and perspectives as evidenced by observations or information provided.

September 2024

Our school's arrangements for consulting with, listening and responding to pupils are parent evenings, parent forums, school communications, website, Firefly, termly newsletter, letters home, school planners, individual meetings, email.

There is a commitment to the continuous development of staff with regard to safeguarding training:

- All staff access training annually with regular updates across the academic year
- We undertake SSCP 'endorsed' Basic Awareness training and all new staff, as part of their induction, access safeguarding training within the first term of their employment/placement
- The Designated Lead and/or deputy attends the SSCP DSL safeguarding training on bi-annual basis
- The Designated Safeguarding Lead, and/or Deputy attend the Designated Safeguarding Lead Network Meetings held each term, coordinated by the SASE, thereby enabling them to keep up to date with safeguarding practices and be aware of any concerns/themes emerging locally.

### DEFINITIONS:

Staff are trained and supported to understand and recognise indicators of the types of abuse that some children experience and work to the following definitions:

All school staff are aware that abuse, neglect and safeguarding issues are rarely standalone events that can be covered by one definition or label. In most cases multiple issues may overlap with one another.

**Abuse:** a form of maltreatment of a child. Somebody may abuse or neglect a child by inflicting harm or by failing to act to prevent harm. Harm can include ill treatment that is not physical as well as the impact of witnessing ill treatment of others. This can be particularly relevant, for example, in relation to the impact on children of all forms of domestic abuse, including where they see, hear or experience its effects. Children may be abused in a family or in an institutional or community setting by those known to them or, more rarely, by others. Abuse can take place wholly online, or technology may be used to facilitate offline abuse. Children may be abused by an adult or adults or by another child or children.

**Physical abuse:** a form of abuse which may involve hitting, shaking, throwing, poisoning, burning or scalding, drowning, suffocating or otherwise causing physical harm to a child. Physical harm may also be caused when a parent or carer fabricates the symptoms of, or deliberately induces, illness in a child.

**Emotional abuse:** the persistent emotional maltreatment of a child such as to cause severe and adverse effects on the child's emotional development.

It may involve conveying to a child that they are worthless or unloved, inadequate, or valued only in so far as they meet the needs of another person.

It may include not giving the child opportunities to express their views, deliberately silencing them or 'making fun' of what they say or how they communicate.

It may feature age or developmentally inappropriate expectations being imposed on children. These may include interactions that are beyond a child's developmental capability as well as overprotection and limitation of exploration and learning, or preventing the child participating in normal social interaction.

It may involve seeing or hearing the ill-treatment of another.

It may involve serious bullying (including cyberbullying), causing children frequently to feel frightened or in danger, or the exploitation or corruption of children.

Some level of emotional abuse is involved in all types of maltreatment of a child, although it may occur alone.

**Sexual abuse:** involves forcing or enticing a child or young person to take part in sexual activities, not necessarily involving a high level of violence, whether or not the child is aware of what is happening. The activities may involve physical contact, including assault by penetration (for example rape or oral sex) or non-penetrative acts such as masturbation, kissing, rubbing and touching outside of clothing. They may also include non-contact activities, such as involving children in looking at, or in the production of, sexual images, watching sexual activities, encouraging children to behave in sexually inappropriate ways, or grooming a child in preparation for abuse (including via the internet). Sexual abuse is not solely perpetrated by adult males. Women can also commit acts of sexual abuse, as can other children.

**Neglect:** the persistent failure to meet a child's basic physical and/or psychological needs, likely to result in the serious impairment of the child's health or development. Neglect may occur during pregnancy as a result of maternal substance abuse. Once a child is born, neglect may involve a parent or carer failing to:

- provide adequate food, clothing and shelter (including exclusion from home or abandonment);
- protect a child from physical and emotional harm or danger;
- ensure adequate supervision (including the use of inadequate care-givers); ensure access to appropriate medical care or treatment.
- include neglect of, or unresponsiveness to, a child's basic emotional needs.

### COMPLEX SAFEGUARDING:

Complex safeguarding is used to describe criminal activity (often organised) or behaviour associated to criminality, involving often vulnerable children where there is exploitation and/or a clear or implied safeguarding concern.

In Stockport domestic abuse has been included within this definition in acknowledgement of the similarities between the process of grooming and controlling victims of domestic abuse and those subject to complex abuse and the need for a specialist and sensitive approach to working with children and families at highest risk of all these areas of concerns to reduce risk and effect positive outcomes. Stockport family have agreed that the following areas are encompassed within complex safeguarding:

- Domestic Abuse including honour-based violence and forced marriage
- Child Sexual Exploitation (CSE)
- Serious Organised Crime – including Child Criminal Exploitation (CCE)
- Modern Slavery and Trafficking
- Female Genital Mutilation
- Radicalisation and Extremism

**CHILD SEXUAL EXPLOITATION (CSE):** is a form of child sexual abuse, it involves exploitative situations, contexts and relationships where young people receive something (for example food, accommodation, drugs, alcohol, gifts or money) as part of a grooming process. Ultimately, this results in them engaging in sexual activities. Sexual exploitation can take many forms ranging from the seemingly 'consensual' relationship where sex is exchanged for affection or gifts, to serious organised crime by gangs and groups. All staff are alert to possible indicators and will raise concerns as appropriate. They are aware of the pan Greater Manchester CSE policy and procedures and of the school screening tool (SERAT) including where to find it, how to complete it and what happens next.

We take a proactive approach to preventative work by communication and education through dedicated tutor time periods, PSHE lessons, assemblies, notes of concern, monitoring students carefully, tracking behaviour, being aware of friendship groups and running workshops for potentially vulnerable students including the REACH programme and working one to one using the Barnardo Real Love Rocks materials. We also signpost to relevant support agencies including Stockport Family Mosaic and Stockport Without Abuse.

Child Sexual Exploitation is a form of child sexual abuse. It occurs where an individual or group takes advantage of an imbalance of power to coerce, manipulate or deceive a child or young person into sexual activity (a) in exchange for something the victim needs or wants, and/or (b) for the financial advantage or increased status of the perpetrator or facilitator. The victim may have been sexually exploited even if the sexual activity appears consensual. Child sexual exploitation does not always involve physical contact; it can occur through the use of technology. (Child Sexual Exploitation, DfE)

### **CHILDREN AND YOUNG PEOPLE WHO HARM OTHERS (ALSO REFERRED TO AS PEER-ON-PEER ABUSE):**

We understand that safeguarding issues can manifest themselves via peer-on-peer abuse. This may include:

- bullying (including cyber bullying),
- gender based violence/sexual assaults
- sexting and *upskirting*
- physical abuse such as hitting, kicking, shaking, biting, hair pulling, or otherwise causing physical harm;
- initiating/hazing type violence and rituals

Staff are clear on our procedures with regards to peer on peer abuse and such matters are always taken seriously. In our school we deal with incidents in the following way;

#### School action

The school encourages students and parents to tell teachers about bullying incidents.

- All reported incidents are taken seriously and investigated as soon as possible. They will be dealt with quickly, firmly and fairly.
- Support will be given to the victim and the perpetrator. The emphasis will be on behaviour modification. Perpetrators will be given the opportunity to understand the feelings of their victim and what are the effects of their bullying. School has successfully used the strategy of inviting parents of both parties into school, with the children to draw the bullying to a conclusion through empathy and negotiation work. However, persistent perpetrators will be dealt with more severely using school sanctions. Police may be involved in serious bullying incidents.

- The school community will be organised in order to minimise opportunities for bullying and/or victimisation, e.g. by providing increased supervision at problem times and in problem areas.
- Opportunities will be provided to discuss aspects of bullying/harm, and the appropriate way to behave towards each other, e.g. using the PSHE programme, in form time, in SEAL discussions, in assemblies etc.
- The School Anti-Bullying Policy and its degree of success will be reviewed annually.
- The school staff will continue to have a firm but fair discipline structure.
- Teaching materials or equipment which give a bad or negative view of any group because of their ethnic origin, sex, disability, sexual orientation etc. will not be used.
- Students will be encouraged to discuss how they get on with other people and to form positive attitudes towards other people. This will include a review of what friendship really is.
- Students will be encouraged to treat everyone with respect.

### SEXUAL VIOLENCE AND SEXUAL HARASSMENT:

Sexual violence and sexual harassment can occur between two children of **any age and sex**. It can also occur through a group of children sexually assaulting or sexually harassing a single child or group of children.

Children who are victims of sexual violence and sexual harassment will likely find the experience stressful and distressing, and it may adversely affect their educational attainment. Sexual violence and sexual harassment exist on a continuum and may overlap, they can occur online and offline (both physically and verbally) **and are never acceptable**. It is important that **all** victims are taken seriously and offered appropriate support.

We understand that reports of sexual violence and sexual harassment are extremely complex to manage. It is essential that victims are protected, offered appropriate support and every effort is made to ensure their education is not disrupted. It is also important that other children, adult students and school and college staff are supported and protected as appropriate. We take reports of sexual harassment and sexual violence seriously and will always act to address reports and concerns we do this by:

- not tolerating or dismissing sexual violence or sexual harassment as “banter”, “part of growing up”, “just having a laugh”, “boys being boys” or “young people being young people”;
- challenging behaviour (potentially criminal in nature), such as grabbing bottoms, breasts and genitalia and flicking bras and lifting skirts. Dismissing or tolerating such behaviours risks normalising them; and
- understanding that all the above can be driven by wider societal factors beyond the school and college, such as everyday sexist stereotypes and everyday sexist language. Ensuring we have a whole school/college approach (especially preventative education).
- We adhere to Government guidance as described in [Sexual\\_violence\\_and\\_sexual\\_harassment\\_between\\_children\\_in\\_schools\\_and\\_colleges.pdf](#) and local guidance including harmful sexual behaviours presented by children and young people . We will always make referrals as appropriate and ensure staff are trained and informed of our approaches to this matter.

## CONTEXTUAL SAFEGUARDING:

Safeguarding incidents and/or behaviours can be associated with factors outside the school and/or can occur between children outside the school. All staff, but especially the designated safeguarding lead (or deputy) should be considering the context within which such incidents and/or behaviours occur. This is known as contextual safeguarding, which simply means assessments of children should consider whether wider environmental factors are present in a child's life that are a threat to their safety and/or welfare. Children's social care assessments should consider such factors, so it is important that schools and colleges provide as much information as possible as part of the referral process. This will allow any assessment to consider all the available evidence and the full context of any abuse.

The school fully engages with the 'Team Around the School' process (TAS), a process coordinated by the School Age+ team. A half termly meeting is set which allows Pastoral Managers to meet with the school link Social Worker, School Age+ worker, school nurse and occasionally other agencies (YOS, MOSAIC, etc.) to discuss individual and family cases of need. Pastoral Managers complete a TAS form before each meeting identifying families in need of support and these are further discussed by the school age+ worker and their manager; decisions follow as to the best service to support the family. Minutes of TAS meeting and decisions taken are disseminated to the Pastoral Team at school. Open cases, new referrals and any cases that have been stepped up to social care are discussed

## ROLES AND RESPONSIBILITIES:

### Governance and Leadership

The governing body and leadership team have a strategic responsibility for our safeguarding arrangements and will comply with their duties under legislation. The governing body have regard to the KCSIE guidance and will ensure our policies, procedures and training is effective and complies with the law at all times.

The governing body will facilitate a whole school approach to safeguarding which involves everyone. They will ensure that safeguarding and child protection are at the forefront and underpin all relevant aspects of process and policy development, so that all systems, processes, and policies operate with the best interests of the child at their heart.

The governing body are aware of their obligations under the Human Rights Act 1998, the Equality Act 2010, (including the Public Sector Equality Duty), and the local multi-agency safeguarding arrangements set out by the Stockport Safeguarding Children Partnership ([SSCP](#)).

The governing body and leadership team will ensure that there are policies and procedures in place to ensure appropriate action is taken in a timely manner to safeguard and promote children's welfare.

The Headteacher will ensure that our child protection and safeguarding policies and procedures adopted by the governing body, are understood, and followed by all staff.

The Headteacher will allocate sufficient time, training, support, and resources, including cover arrangements, when necessary, to enable the DSL and deputy to carry out their roles effectively, including the assessment of students and attendance at strategy discussions and other necessary meetings.

The Headteacher will ensure that all staff feel able to raise concerns about poor or unsafe practice and that such concerns are handled sensitively and in accordance with confidential reporting/whistle blowing procedures.

The Headteacher will ensure that students are provided with opportunities throughout the curriculum to learn about safeguarding, including keeping themselves safe online.

The Headteacher will liaise with the Local Authority Designated Officer where an allegation is made against a member of staff and ensures that anyone who has harmed or may pose a risk to a child is referred to the Disclosure and Barring Service.

The Headteacher will ensure any learning requirements following an allegation management review are implemented effectively and will work with LA Officers as needed such as the Senior Advisor for Safeguarding in Education.

The governing body will ensure an appropriate senior member of staff, from the school leadership team, is appointed to the role of designated safeguarding lead. The governing body and leadership team will ensure that the DSL is supported in their role and is provided with sufficient time so they can provide appropriate support to staff and children regarding any safeguarding and welfare concerns.

The school has a nominated governor for safeguarding. The nominated governor will support the DSL and have oversight in ensuring that the school has an effective policy which interlinks with other related policies, that locally agreed procedures are in place and being followed, and that the policies are reviewed at least annually or more often when required.

#### Designated Safeguarding Lead (DSL)

The school has appointed a member of the senior leadership team, as the Designated Safeguarding Lead (DSL).

The DSL has overall responsibility for the day-to-day oversight of safeguarding and child protection systems (including online safety) in school. Whilst the activities of the DSL may be delegated to the deputies, the ultimate lead responsibility for safeguarding and child protection remains with the DSL and this responsibility will not be delegated.

The school has also appointed Deputy DSLs who will have delegated responsibilities and act in the DSL's absence.

The DSL and deputies ensure there are robust systems to build an understanding of the presenting safeguarding needs of our children and young people. They retain oversight and will support and advise where there are safeguarding concerns. They will ensure an appropriate response is co-ordinated.

It is the role of the DSL to carry out their functions as identified in Annex C of KCISE 2024. This includes but is not limited to:

- Acting as the central contact point for all staff to discuss any safeguarding concerns
- Maintaining a confidential recording system for safeguarding and child protection concerns
- Coordinating safeguarding action and intervention for individual children

- When supporting children with a social worker or looked after children, the DSL should have the details of the child's social worker and the name of the virtual school head in the authority that looks after the child, with the DSL liaising closely with the designated teacher.
- Liaising with other agencies and professionals in line with KCSIE 2024 and WTSC 2018
- Ensuring that locally established procedures as put in place by the three safeguarding partners as part of the Stockport Safeguarding Children Partnership (SSCP) procedures, including referrals, are followed, as necessary.
- Representing the school at multi-agency safeguarding meetings (including child protection conferences), or ensuring appropriate representation
- Managing and monitoring the school role in any multi-agency plan for a child.
- Being available during school hours for staff in the school to discuss any safeguarding concerns.
- Helping promote educational outcomes by sharing the information about the welfare, safeguarding and child protection issues that children, including children with a social worker, are experiencing, or have experienced, with teachers and school leadership staff.
- Ensuring adequate and appropriate DSL cover arrangements in response to any closures and out of hours and/or out of term activities.
- Ensuring all staff access appropriate safeguarding training and relevant updates in line with the recommendations within KCSIE.
- Liaising with the headteacher/principal to inform them of any safeguarding issues, especially ongoing enquiries under section 47 of the Children Act 1989 and police investigations.
- Ensuring that the requirement for children to have an Appropriate Adult ([PACE Code C 2019](#)) is understood and observed at all times.

The DSL will undergo appropriate and specific training to provide them with the knowledge and skills required to carry out their role. Deputy DSLs will be trained to the same standard as the DSL. The DSLs' training will be updated formally at least every two years, but their knowledge and skills will be updated through a variety of methods at regular intervals and at least annually. This will include attending network events, reading updates and bulletins and engaging with the SSCP.

### Members of Staff

All staff play a particularly important role in safeguarding as they are in a position to identify concerns early, provide help for children, promote children's welfare, and prevent concerns from escalating.

All members of staff have a responsibility to:

- provide a safe environment in which children can learn.
- be aware of the indicators of abuse and neglect so that they can identify cases of children who may need help or protection.
- know what to do if a child tells them that they are being abused, neglected, or exploited and understand the impact abuse and neglect can have upon a child.
- be able to identify and act upon indicators that children are, or at risk of developing mental health issues.
- be prepared to identify children who may benefit from early help.
- understand the early help process and their role in it.
- understand the school safeguarding policies and systems.
- undertake regular and appropriate training which is regularly updated.
- be aware of the local process of making referrals to children's social care and statutory assessment under the Children Act 1989.



- know how to maintain an appropriate level of confidentiality.
- reassure children who report concerns that they are being taken seriously and that they will be supported and kept safe.
- act in line with Teachers' Standards 2012 which state that teachers (including headteachers) should safeguard children's wellbeing and maintain public trust in the teaching profession as part of their professional duties.

Staff at Stockport School recognise that children may not feel ready or know how to tell someone that they are being abused, exploited, or neglected, and/or they may not recognise their experiences as being abusive or harmful. This should not prevent staff from having professional curiosity and speaking to a DSL if they have any concerns about a child.

Staff at Stockport School will seek to build trusted relationships with children, young people and parents/carers which facilitate appropriate professional communication in line with existing and relevant policies, for example, name policies.

Where a member of staff is concerned that a child is in immediate danger or is at risk of harm, they should report this to the Designated Safeguarding Lead, or their Deputy, **without delay**. A written record will be made of these concerns as immediately following the disclosure/concern being raised.

Where staff have conversations with a child who discloses abuse, they follow the basic principles:

- listen and remain calm
- never ask a child if they are being abused
- make a record of discussion to include time, place, persons present and what was said (child language – do not substitute words)
- advise you will have to pass the information on
- never take photographs of any injury
- never record a child
- never undress a child to physically examine them
- allow time and provide a quiet space for support
- At no time promise confidentiality to a child or adult.

#### **We will notify any Lead Social Worker if:**

- a pupil subject to a Child Protection Plan (CPP) is excluded (fixed term or permanent)
- there is an unexplained absence of a pupil on a CPP of more than 2 days or 1 day following a weekend, or as agreed as part of a CPP
- if a child is missing and there is a need to follow Stockport's policy and any statutory guidance on Children Missing Education (CME)
- additional concerns arise

We understand that parents often hold key information about incidents, allegations or concerns therefore, **in the majority of situations; the Designated Safeguarding Lead or key staff member of school staff will speak to the parents and gain their consent** to discuss any matters with other relevant agencies. There will be very few instances where, to speak to the parents, could further endanger the child. In those situations, they would still consult/refer, but would have clearly recorded reasons as to why they had not gained parental consent.

## THE USE OF 'REASONABLE FORCE':

There are circumstances when it is appropriate for staff in schools to use reasonable force to safeguard children. The term 'reasonable force' covers the broad range of actions used by staff that involve a degree of physical contact to control or restrain children. This can range from guiding a child to safety by the arm, to more extreme circumstances such as breaking up a fight or where a young person needs to be restrained to prevent violence or injury. 'Reasonable' in these circumstances means 'using no more force than is needed'

## SAFER USE OF THE INTERNET AND DIGITAL TECHNOLOGY

Stockport School recognises that in a modern learning environment, use of the Internet, multimedia devices and digital imaging facilities are part of everyday requirements. However, a child/young person's safety will remain the priority of the school.

All staff are aware that any items that have capability for use of the Internet or the creation of digital images (including mobile phones) must be used by children/young people under appropriate supervision and in accordance with the school's acceptable use policy. If any such item that belongs to a member of staff is brought onto the school site, it is the responsibility of that staff member to ensure that these items contain nothing of an inappropriate nature and that they are used in line with school policy (see Acceptable Use Policy (AUP) Children/young people are not permitted to directly access items that do not belong to the school, without appropriate risk assessments and permission being sought.

If there is any suspicion that any multimedia device or computer contains any images or content of an inappropriate nature it will be locked, secured and, the Head Teacher or DSL will be informed immediately.

## USE OF MOBILE PHONES:

Mobile phones have a place in settings, especially on outings when they are often the only means of contact available to settings and can be helpful in ensuring children are kept safe.

We will:

- Only use mobile phones appropriately, and ensure staff have a clear understanding of what constitutes misuse and know how to minimise the risk.
- Ensure the use of a mobile phone does not detract from the quality of supervision and care of children.
- Ensure all mobile phone use is open to scrutiny.
- Ensure staff are vigilant and alert to any potential warning signs of the misuse of mobile phones.
- Ensure staff are responsible for their own behaviour regarding the use of mobile phones and understand how to avoid putting themselves into compromising situations, which could be misinterpreted and lead to potential allegations.
- Ensure the use of mobile phones on outings is included as part of the risk assessment, for example, how to keep personal numbers that may be stored on the phone safe and confidential.
- Adhere to the school policy on the recording of images and the use of equipment – see E-Safety policy

### WORK MOBILE PHONES:

To protect children, we will ensure that the work mobile:

- Is only used by allocated people.
- Is protected with a password/ PIN and clearly labelled.
- Is stored securely when not in use.
- Is not used in areas such as toilets, changing rooms, nappy changing areas and sleep areas.
- If used for taking photographs, the images are deleted regularly and are taken in line with prior written parent/carer permission.

### PERSONAL MOBILE PHONES:

To protect children, we will ensure that personal mobiles:

- Are stored securely and will be switched off whilst staff are on duty.
- Are not used to take pictures of the children attending the setting or that images are not shared.
- Will not be used to take photographs, video or audio recordings in our setting.
- Are not used to contact parents or children –exception will only be by agreement with the SLT.

Visitors are not permitted to use mobile phones or other camera/ internet enabled devices without the express permission of the Headteacher

Children are aware that use of mobile phones is not acceptable within the school day and parents have been informed of this. Any mobile phones seen will be confiscated and an adult will need to visit the school to collect.

In line with Keeping Children Safe in Education 2024, we have a clear policy on the use of mobile technology in the school.

### CAMERAS: PHOTOGRAPHY AND IMAGES:

Most people who take or view photographs or videos of children do so for entirely innocent, understandable and acceptable reasons. However, due to cases of abuse to children through taking or using images, we must ensure that we have safeguards in place.

To protect children, we will:

- Obtain parents' and carers' consent for photographs to be taken used for or published (for example, on our website or displays).
- Ensure the school's designated camera is only used in the school and any images taken will not be emailed as it may not be secure. (In some instances, it may be required to seek parental permission to email images, but the potential risks must be made clear to parents).
- Ensure that children are appropriately dressed, and only use the child's first name with an image.
- Ensure that personal cameras are not used to take photographs, video or audio recordings in our school without prior explicit consent from the school, for example, for a special event, such as a school production
- Ensure that all images are stored securely, and password protected. Where images are stored the setting will register with the Information Commissioners Office (ICO), in accordance with data protection laws.
- Ensure where professional photographers are used DBSs, references and parental consent will be obtained prior to photographs being taken.

- Ensure 'acceptable use' rules regarding the use of cameras and camera enabled devices by children are embedded in practice.
- Ensure the use of cameras is closely monitored and open to scrutiny.

### The sharing of nude or semi-nude pictures (SOMETIMES KNOWN AS SEXTING)

In the latest advice for school/colleges and colleges (UKCIS, 2020), this is defined as the sending or posting of nude or semi-nude images, videos, or live streams online by young people under the age of 18. This could be via social media, gaming platforms, chat apps or forums. It could also involve sharing between devices via services like Apple's Air Drop which works offline. Alternative terms used by children and young people may include 'pics' or similar.

The motivations for taking and sharing nude and semi-nude images, videos and live streams are not always sexually or criminally motivated.

Where staff members or others working in our setting become aware of the sharing of any such imagery the following steps should be taken.

#### What to do if an incident comes to your attention

**Report it to your Designated Safeguarding Lead (DSL) or equivalent immediately. Your setting's child protection policy should outline codes of practice to be followed.**

**Never** view, copy, print, share, store or save the imagery yourself, or ask a child to share or download – **this is illegal.**

If you have already viewed the imagery by accident (e.g., if a young person has showed it to you before you could ask them not to), report this to the DSL (or equivalent) and seek support.

**Do not** delete the imagery or ask the young person to delete it.

**Do not** ask the child/children or young person(s) who are involved in the incident to disclose information regarding the imagery. This is the responsibility of the DSL (or equivalent).

**Do not** share information about the incident with other members of staff, the young person(s) it involves or their, or other, parents and/or carers.

**Do not** say or do anything to blame or shame any young people involved.

**Do** explain to them that you need to report it and reassure them that they will receive support and help from the DSL (or equivalent).

Further advice can be found here:

[sharing-nudes-and-semi-nudes-advice-for-education-settings-working-with-children-and-young-people/sharing-nudes-nd-semi-nudes-advice-for-education-settings-working-with-children-and-young-people](#)

### ONLINE HARMS:

We recognise that technology can be a significant component in many safeguarding and wellbeing issues; children are at risk of abuse online from people they know (including other children) and from people they do not know; in many cases, abuse will take place concurrently via online channels and in daily life. We take steps to reduce these harms through our curriculum and the application of our policies and ensure staff know to be professionally curious about the online lives of our children.

### CYBERCRIME:

We understand that children with particular skill and interest in computing and technology may inadvertently or deliberately stray into 'cyber-enabled' (crimes that can happen offline but are enabled at scale and at speed online) or 'cyber dependent' (crimes that can be committed only by using a computer/internet enabled device) cybercrime.

If staff are concerned that a child may be at risk of becoming involved in cyber-dependent cybercrime, the DSL or a deputy will be informed, and consideration will be given to accessing local support which aims to intervene when young people are at risk of committing, or being drawn into, low level cyber-dependent offences and divert them to a more positive use of their skills and interests.

Where there are concerns about 'cyber-enabled' crime such as fraud, purchasing of illegal drugs online, child sexual abuse and exploitation, or other areas of concern such as online bullying or general online safety, they will be responded to in line with the child protection and other appropriate policies.

See also- <https://www.gmp.police.uk/advice/advice-and-information/fa/fraud/online-fraud/cyber-crime-fraud/>

### CYBER-BULLYING:

Cyber bullying is defined and covered in our Anti-bullying Policy.

### ONLINE & GAMING SAFETY:

The internet and internet gaming are enjoyed by many people and are often activities families can enjoy together. However, use of the internet and online games isn't without risk.

As part of our approach to online safety we will support pupils and their families in understanding the potential risks of online activity and how best to avoid them. We will work with parents and carers to support them in the following:

- Understanding the appropriateness of games and apps
- location and access to information and resources for adults and pupils
- teaching e-safety in the curriculum

- offering parental information and advice sessions
- raising awareness of online grooming
- teaching our children how to report abuse or concerns

Parental advice is available here- [https://www.thinkuknow.co.uk/11\\_13/Need-advice/Gaming/](https://www.thinkuknow.co.uk/11_13/Need-advice/Gaming/)

In school we ensure that we have suitable filtering and monitoring systems in place, as described in Keeping children Safe and the Prevent Duty. Our staff are aware of our systems and their individual responsibilities and roles.

The DSL has responsibility for ensuring our filtering and monitoring systems and standards are efficient and effective in- as set out in KCSIE 2024 and [meeting-digital-and-technology-standards-in-schools-and-colleges/filtering-and-monitoring-standards-for-schools-and-colleges](#)

### MENTAL HEALTH AND WELLBEING:

KCSIE 2024 reminds us of the importance of understanding emotional wellbeing and mental health and the relevance of these to the safeguarding agenda.

All staff recognise that mental health problems can, in some cases, be an indicator that a child has suffered or is at risk of suffering abuse, neglect or exploitation.

Staff are aware that children's experiences, for example where children have suffered abuse, neglect or exploitation, or other potentially traumatic Adverse Childhood Experiences (ACEs), can impact on their mental health, behaviour, and education.

Staff are well placed to observe children day-to-day and identify those whose behaviour suggests that they may be experiencing a mental health problem or be at risk of developing one.

If staff are concerned about a child's mental health, they understand they must treat it as a safeguarding concern, immediate action should be taken by speaking to the DSL or a deputy.

### PROCEDURES AND RECORD-KEEPING:

Stockport School will follow [Greater Manchester Safeguarding Procedures](#) in detail and adhere to any local guidance and policies from SSCP as required.

Safeguarding Records are held electronically. Reports relating to Safeguarding and Child Protection concerns are kept in a separate, confidential file, securely stored away from the main pupil file. Authorisation to access these records is controlled by the Headteacher and Designated Safeguarding Lead.

The school ensures that safeguarding information, including Child Protection information, is stored and handled in line with the principles of the Data Protection Act 2018 and General Data Protection Regulation (GDPR) ensuring that information is:

- used fairly and lawfully

- for limited, specifically stated purposes
- used in a way that is adequate, relevant and not excessive
- accurate
- kept for no longer than necessary
- handled according to people's data protection rights
- kept safe and secure

Any concerns about a child will be recorded in writing as soon as possible and in any circumstance within 24 hours. **The inability to record a concern should not delay the sharing of urgent information to the DSL (police or social care if required) verbally. Written records should then be made as soon as possible.**

All records will provide a factual, evidence-based account using the child's words. Timely, accurate recording of every episode/incident/concern/activity/actions will be made **including telephone calls to other professionals**. Records will be signed, dated and where appropriate, witnessed. Support and advice will be sought from Children's Social Care (via the MASSH), Senior Advisor for Safeguarding in Education (SASE) or the Local Area Designated Officer (LADO), whenever necessary.

There is always a DSL on hand who has the necessary seniority and skills, has undertaken appropriate safeguarding training, and is given the time to carry out this important role.

This safeguarding policy is updated annually or in line with any new DfE guidance (as required).

In the case of child protection referral, the DSL will contact MASSH immediately (alongside any other emergency or support services that may be required).

In the case of poorly explained serious injuries / injuries causing concern or where behaviour or concerns arouse suspicion or if in any doubt, the Designated Safeguarding Lead should contact the MASSH for advice.

The DSL will keep written (electronically or by hand), signed, timed and dated records detailing any disclosures and action taken as near to the time of disclosure as possible even when no investigation is undertaken; should the MASSH agree to initiate a referral verbally a Child Protection Referral Form will still be required within 24 hours.

Allegations are always shared directly with the Headteacher. Where an allegation of abuse is made against any member of staff/ volunteer, deputy or designated safeguarding person, the Headteacher will speak with the Local Authority Designated Officer (LADO) at the Safeguarding Children Unit to discuss the next steps.

If the allegation is against the Head, the Chair of Governors should be contacted immediately, and s/he seek advice from the LADO. If the allegation is against both Head and Chair then the LADO should be contacted directly. No member of staff will conduct their own investigation or pass on information to the alleged perpetrator. Professionals can contact the LADO directly if they feel it is more appropriate to do so.

## SUPERVISION AND SUPPORT

The induction process will include familiarisation with child protection responsibilities and procedures to be followed if members of staff have any concerns about a child's safety or welfare.

The school/college will ensure that members of staff who are working within the foundation stage are provided with appropriate supervision in accordance with the statutory requirements of Early Years Foundation Stage (EYFS) 2021. For schools with early years and foundation stage provision only.

The school/college will provide appropriate supervision and support for all members of staff to ensure that:

- All staff are competent to carry out their responsibilities for safeguarding and promoting the welfare of children
- All staff are supported by the DSL in their safeguarding role.
- All members of staff have regular reviews of their own practice to ensure they improve over time.

Any member of staff affected by issues arising from concerns for children's welfare or safety can seek support from the DSL.

The DSL will also put staff in touch with outside agencies for professional support if they so wish. Staff can also approach organisations such as their Union, Counselling, and welfare services.

### WHISTLEBLOWING/CONFIDENTIAL REPORTING

Our school has a whistleblowing procedure as outlined in the school's Whistleblowing policy. It is important to note that it is part of a professional's duty to report safeguarding issues, without the expectation of anonymity. Safeguarding and whistleblowing should not be confused. "Safeguarding" refers to reporting concerns designed to protect children from harm and acting to enable all children to have the best outcomes. In contrast "whistleblowing" describes the disclosure of concerns regarding a danger or illegality that has a public interest, usually because it threatens others or impacts on public funds.

All staff are aware of the school whistleblowing procedures and are aware of their duty to report concerns about the conduct of a colleague that could place a child at risk.

Where school has a statutory duty to refer to the Disclosure and Barring Service (DBS) it will do so ensuring that the LADO and the Senior Advisor for Safeguarding in Education are aware.

### CHILDREN WHO ARE ABSENT FROM EDUCATION:

Under section 175 of the Education Act 2002 we have a duty to investigate any unexplained absences.

At Stockport School we follow Stockport's procedures for dealing with children who are absent from education. All staff are aware that children going missing, particularly repeatedly, are potentially vulnerable to harm including abuse and neglect, such as sexual abuse or exploitation and child criminal exploitation. It may indicate mental health problems, risk of substance abuse, risk of travelling to conflict zones, risk of female genital mutilation or risk of forced marriage.



We also ensure that we are rigorous in our attendance procedures; these are outlined in our attendance policy. Where a child's destination is unknown when they have left our school, we ensure we carry out all necessary checks and refer them as a child absent from education.

### ELECTIVE HOME EDUCATION (EHE):

Where a parent/carer expresses their intention to remove a child from school with a view to educating at home, we will respond in line with [Elective Home Education – national guidance](#) and local [Stockport](#) guidance. We will work together with parents/carers and other key professionals and organisations to ensure decisions are made in the best interest of the child.

### SEARCHING AND SCREENING:

Following a concern about a child's safety or welfare, the searching and screening of children and confiscation of any items, including any electronic devices, will be managed in line with the school behaviour policy and/or 'Searching, Screening and Confiscation' policy which is informed by the DfE '[Searching, screening and confiscation at school](#)' guidance.

The designated safeguarding lead, deputy, or Headteacher, will be informed of any searching incidents, this will be done as a matter of urgency where the member of staff has reasonable grounds to suspect a pupil was in possession of a prohibited item/s such as:

- knives and weapons
- alcohol
- illegal drugs
- stolen items
- or any article that the member of staff reasonably suspects has been, or is likely to be used:
- to commit an offence,
- to cause personal injury to, or damage to property of; any person (including the pupil)
- an article specified in regulations
- tobacco and cigarette papers
- fireworks
- pornographic images

Staff members should also involve the designated safeguarding lead, deputy, or Headteacher without delay if they believe that a search has revealed a safeguarding risk.

### **Advice from the Headteacher and or DSL will be sought if it is thought a police search is required.**

The Headteacher and DSL are aware of the requirement for children to have an Appropriate Adult ([PACE Code C 2019](#)) where there is a need for detention, treatment and questioning by police officers and will respond to concerns in line with our school/college 'Searching, Screening and Confiscation' policy and/or behaviour policy, which is informed by the DfE '[Searching, screening and confiscation at school](#)' guidance.

## SUPPORTING VULNERABLE PUPILS

The school will endeavour to support vulnerable pupils through:

- Its ethos and culture which promotes a positive, supportive and secure environment; giving pupils a sense of being valued.
- Its behaviour policy -aimed at supporting vulnerable pupils in school. All staff will agree a consistent approach, working to support children in developing positive behaviour.
- Liaison with other appropriate agencies which support the pupil.
- Developing supportive relationships.
- Recognition that children living in difficult home environments are vulnerable and are in need of support and protection.
- Monitoring pupil welfare, keeping accurate records and notifying appropriate agencies when necessary.
- Ensuring designated safeguarding staff and their team have the opportunity to attend face to face SSCP training and network updates. (For example, child sexual exploitation, domestic violence, drugs / alcohol substance misuse, Female Genital Mutilation-FGM, etc.)
- Ensuring information is transferred safely and securely when a pupil with a child protection record moves to another school. Also notifying Key Workers or Social Workers where a child leaves the school (as appropriate)

## CHILDREN WITH SPECIAL NEEDS AND DISABILITIES:

We ensure that staff have knowledge and understanding of the additional barriers which can exist when recognising abuse, neglect or exploitation in children with special needs/disabilities.

These barriers **can** include:

- assumptions that indicators of possible abuse such as behaviour, mood and injury relate to the child's disability without further exploration;
- children with SEN and disabilities being disproportionately impacted by things like bullying - without outwardly showing any signs; and
- communication barriers and difficulties in overcoming these barriers

We regularly review our training and practice to enable staff to respond to these specific needs.

## EARLY IDENTIFICATION RECOGNISING AND RESPONDING TO SAFEGUARDING NEEDS

The school acknowledges the findings of Serious Case Reviews, local learning reviews and audits. Findings are shared with all staff as part of a culture of improvement and learning. The DSL ensures s/he has information from SSCP in relation to learning reviews and ensures this information is passed on to staff to promote improvement in respect of safeguarding. As part of our ongoing culture of vigilance and development we will share learning and responses from any other relevant issues to ensure we are offering the safest environment for our pupils and staff.

All staff have seen and understand the Stockport [Levels of Need](#) document and know how to pass on any concerns no matter how 'small or low level' they seem. In accordance with local and national guidance all staff receive regular training and updates to help them identify when a child is vulnerable. We ensure that

the most appropriate referrals are made in a timely manner. We seek to work in a transparent way with our families and where appropriate will share our concerns directly with parents and indicate possible routes of support. We actively support multi agency approaches when supporting children and families. We do this based on an awareness that early help and intervention can prevent future escalation of any presenting issues. We aim to provide information from the child's point of view in the context of their lived experience as evidenced by observations or information provided. Where staff have concerns, they will always alert the DSL.

In school we have staff that are trained and can support colleagues to identify and respond to:

- Neglect
- Drug/substance/alcohol misuse (both pupil and parent)
- Child sexual exploitation / trafficked children
- Children who are absent from education
- Domestic abuse
- Peer relationship abuse
- Peer abuse
- Children at risk of radicalisation
- Emotional wellbeing & mental health
- Sexual health needs
- Obesity/malnutrition
- Online grooming
- Inappropriate behaviour of staff towards children
- Bullying, including homophobic, racist, gender and disability. Breaches of the Equality Act 2010.
- Self-Harm
- Bullying in its various forms
- Discrimination in its various forms
- Female Genital Mutilation
- Forced Marriage
- Young carers
- The potential additional needs of some learners such as - Looked After Children (LAC), children who have been previously LAC, those who have Special Educational Needs or Disabilities (SEND) and children whose families are seeking asylum.
- How an Education Health Care (EHC) plan links with other safeguarding processes

**The DSL and their deputy are member(s) of the school senior leadership team.** In line with local and national guidance they receive regular training and updates to equip them with the skills and knowledge to deliver in this role.

A DSL is always available to offer advice and support to school staff when school is open including before and after school activity or for trips and visits.

School staff contribute to assessments and actively support multi- agency planning for children. Staff have an understanding of the Stockport Early Help Assessment (EHA) and Intervention model and make decisions based on a child's development needs, parenting capacity and family & environmental factors to support referrals.

We refer to [Stockport's-multi-agency-response-to-need-guidance-document](#) to support our decision making along with [Greater Manchester Procedures](#)

In contributing to meetings, in addition to information about the child's academic functioning, the school provides information about the 'voice of the child' and the child's experiences of life as evidenced by observations or information provided through the multi-agency forum.

Our school operates a ***Team around the school model*** (TAS). Lead Pastoral staff are instrumental in the organisation and running of TAS meetings, consent is always sought from parents with regard to discussion and information sharing.

### EXTREMISM AND RADICALISATION:

Stockport School seek to protect children and young people from the influences of all violent extremism including, but not restricted to;

- Extremist Far Right / Neo Nazi / White Supremacist ideology
- Islamic extremist ideology
- Irish Nationalist and Loyalist paramilitary groups
- Extremist animal rights movements.

The current threat from terrorism and extremist groups in the United Kingdom may include the exploitation of vulnerable people. Groups may seek to influence vulnerable children and involve them in terrorism or in activity in support of terrorism. The normalisation of extreme views may also make children and young people vulnerable to future manipulation and exploitation.

Stockport School is clear that where there is concern in respect of exploitation of this kind it will be treated as safeguarding concern.

Prevention work and reductions of risks will include the SMSC, PSHE curriculum, SEND policy, assembly policy, integration of pupils by gender and SEN, the application of the anti-bullying policy and a commitment to building and maintaining an inclusive and fair school environment and community. We will apply an appropriate school letting policy.

Whilst the education of children is the prime purpose of our school it is recognised that the school operates in the wider community. Its facilities are therefore only available to local groups when this does not conflict with either the interests of its pupils or the wellbeing and workload of its staff.

### OTHER SPECIFIC SAFEGUARDING ISSUES:

**Domestic abuse/violence:** In our school we believe that all our pupils have the right to be safe at school and in their own homes. We are aware that some children may be living in situations where they are directly or indirectly affected by incidents of domestic abuse or violence. Where we are concerned that domestic abuse or violence is present in the home, we will follow our safeguarding and domestic abuse processes.

We are an Operational Encompass School. We receive information from the Police informing us of domestic abuse incidents relating to the circumstances of children and young people on our roll. Based on the information received our trained staff will make informed decisions on how best to support children and their families.

**Honour Based Violence (HBV) including Forced Marriage (FM):** Our staff have been trained to understand

honour-based violence and forced marriage; they are alert to possible indicators. They are aware that forced marriage is an entirely separate issue from arranged marriage; that it is a human rights abuse and falls within the Crown Prosecution Service definition of domestic violence and that HBV and FM can affect both young men and women.

As a school we would never attempt to intervene directly; where this is suspected, nor would we speak to parents before sharing our concerns with appropriate agencies.

**Female Genital Mutilation (FGM):** All Members of our school community are alert to the possibility of a girl being at risk of FGM, or already having suffered FGM. They have been made aware of potential indicators that a child or young person may be at risk of FGM and will act accordingly on any concerns or disclosures. We will also follow national guidance on mandatory reporting requirements.

**Breast Ironing:** Staff have been made aware of an act of abuse performed on young girls (from around the age of 9 years old) in which their breasts are ironed, massaged and/or pounded, burned with heated objects or covered with an elastic belt to prevent or delay the development of their breasts. Where such abuse is suspected or disclosed staff will follow safeguarding and child protection systems.

### THE EXPLOITATION OF CHILDREN:

The criminal exploitation of children is a geographically widespread form of harm that is a typical feature of county lines criminal activity: drug networks or gangs groom and exploit children and young people to carry drugs and money from urban areas to suburban and rural areas, market and seaside towns. Key to identifying potential involvement in county lines are missing episodes, when the victim may have been trafficked for the purpose of transporting drugs.

Human trafficking is defined by the United Nations, in respect of children, as "the recruitment, transport, transfer, harbouring or receipt of a person by such means as threat or use of force or other forms of coercion, of abduction, of fraud or deception for the purpose of exploitation." **Any** child transported for exploitative reasons is considered to be a trafficking victim.

As a school we are alert to the possible indicators both for our children and their families. Any concerns will be reported using our safeguarding and child protection processes. In addition to Greater Manchester guidance we also refer to [Criminal exploitation of children and vulnerable adults: County Lines](#).

### SERIOUS YOUTH VIOLENCE:

Serious youth violence (including Knife crime) has a huge impact on children and the communities in which they live. It is a societal problem and it cannot be tackled by schools or single agencies alone.

In our school we will seek to support, help and protect children on the school site, and to teach our children/young people about the dangers of weapons/knives and other related dangers. We understand that violence and knife crime do not exist in a vacuum and children who are victims or perpetrators may also be experiencing multiple vulnerabilities. If we become aware that a child or young person is vulnerable, we will use the most appropriate interventions and pathways to address these needs such as; completing an Early Help Assessment, Child protection referral or support from Stockport Youth Offending Service.

### EXCEPTIONAL CIRCUMSTANCES (CLOSURES, PARTIAL CLOSURES, HOME LEARNING):

At Stockport School if we find that there is a need to close or partially close the school and offer home learning we will ensure that any communication, information sharing, and the use of online learning platforms is in line with the privacy and data protection requirements.

All communication with students, parents and carers will take place using school communication systems, for example, school email accounts, phone systems and agreed platforms e.g. Google Classroom. Should an exception be required this will be with the permission of the Headteacher. There is an expectation that staff and students will engage with home learning by adhering to the principles described in our existing Staff Code of Conduct, Behaviour Policy and E-Safety Policy. Where we have issued additional guidance in relation to online working, this will be circulated via school systems and staff will be advised accordingly. Staff and students will be advised how to share concerns as part of any alternative arrangements.

Information on who will deliver sessions, together with lesson content and any sites children may be asked to visit as part of their studies will be shared with parents and carers. Parents and carers will be asked to ensure children are supervised in line with our E-Safety Policy.

In making our arrangements we will be cognisant of safeguarding and remote education during coronavirus (COVID-19) or other similar pandemics.

### SITE SAFETY & SECURITY:

We take the site safety of staff and students seriously and have in place a range of measures and promote the wellbeing of all on site. This includes controlled access to our premises such as, undertaking appropriate checks, signing visitors in and out and issuing guidance on acceptable conduct on site.

As part of our response to the COVID-19 pandemic we may again need to introduce additional steps and measures in response to local and national guidance. If and where this occurs, we will aim to communicate changes via our usual notification routes.

### SAFER RECRUITMENT AND SAFER WORKING PRACTICE:

The school pays full regard to DfE guidance 'Keeping Children Safe in Education' 2024 and with reference to the 'Position of Trust' offence (Sexual Offences Act 2003). We ensure that all appropriate measures are applied in relation to everyone who works in the school who is likely to be perceived by the children as a safe and trustworthy adult.

We do this by:

Operating safer recruitment practices including appropriate Disclosure and Barring Service (DBS) and reference checks, verifying identity, academic and vocational qualifications, obtaining professional references, checking previous employment history and ensuring the person has the right to work in the UK. Our practices also include undertaking interviews and checking if individuals are barred or prohibited from working with children in accordance with DBS and Department for Education (DfE) guidance. We also complete online checks as set out in KCSiE. In line with statutory guidance we maintain a single central record of evidence checks completed for staff and volunteers working in the school community. This document is reviewed termly by a senior member of staff.

Every volunteer and member of staff (including supply staff and those contracted to deliver sports or other activities such as counselling) has a 'safeguarding induction' and we ensure that staff and volunteers always adhere to a published code of conduct and other relevant professional standards. This extends to before and after school activities. Staff and visitors are aware of the requirements in respect of phone usage, camera enabled devices, social media and on-line conduct. Other professionals and visitors to our school are made aware of the requirement and expectations we have in respect of safeguarding our children including the use of mobile and camera enabled devices.

We ensure that:

- Any disciplinary proceedings against staff related to Child Protection matters are concluded in full in accordance with Government guidance "Keeping Children Safe in Education 2024" and SSCP, LADO and HR Policy, procedures and guidance.
- All staff and other adults on site are aware of the need for maintaining appropriate and professional boundaries in their relationship with pupils and parents, following the Code of Conduct and Safer Working Practice Guidance.
- Adequate risk assessments are in place including for extended school/ wrap around provision, volunteers, work placements and holiday activities (directly related to school).
- Staff are clear how to raise a concern, where to find 'whistleblowing policies' and are confident to report concerns of misconduct.
- All staff are required to disclose any convictions, cautions, court orders, reprimands and warnings that may affect their suitability to work with children (whether received before or during their employment at the setting).
- Supply teachers are informed of expectations regarding behaviour and behaviour management. Any concerns relating to supply teachers or others will be passed to the LADO or others as required. Any organisations hiring the building are also subject to these expectations and processes.

### GOVERNING BODY DUTIES & RESPONSIBILITIES:

The Governing Body fully recognises its responsibilities with regard to safeguarding and promoting the welfare of children in accordance with Government guidance and pays particular regard to Keeping Children Safe in Education (2024).

The Governing Body have agreed processes which allow them to monitor and ensure that the school:

- Have robust safeguarding procedures in place, this includes on-line safety and acceptable use policies.
- Operates safer recruitment procedures and appropriate checks are carried out on newly appointed staff and other adults working on the school site.
- Have procedures for dealing with allegations of abuse against any member of staff or adult on site.
- Has appointed a member of the Leadership Team who is designated to take lead responsibility for dealing with safeguarding and Child Protection issues.
- Will take steps to remedy any deficiencies or weaknesses with regard to safeguarding arrangements.
- Is supported by the Governing Body nominating a member responsible for liaising with the LA and/or partner agencies in the event of allegations of abuse against the Headteacher; this is the Chair.
- Carries out an annual review of the safeguarding policy and procedures.

- Carries out an annual safeguarding Audit in consultation with the Governing body, sharing this with the Stockport safeguarding Children Board on request.

## WORKING IN OUR SCHOOL – PRACTICE & EXPECTATIONS:

### STAFF AWARENESS, INDUCTION, AND TRAINING:

All members of staff have been provided with a copy of part one 'Keeping Children Safe in Education' 2024 which covers safeguarding information for staff.

- School leaders, including the DSL will read KCSIE in its entirety.
- School leaders and all members of staff who work directly with children will read annex B.
- All members of staff have signed to confirm that they have **read and understood** the national guidance shared with them.

All new staff and volunteers (including agency and third-party staff) receive safeguarding and child protection training (including online safety), including information to ensure they are aware of the school internal safeguarding processes, as part of their induction. This training is regularly updated and is in line with advice from the safeguarding partners.

All governors receive appropriate safeguarding and child protection (including online safety) training at induction. This training equips them with the knowledge to provide strategic challenge to test and assure that our safeguarding policies and procedures are effective and support the delivery of a robust whole school approach to safeguarding. This training is regularly updated.

All staff members will receive appropriate child protection training (including online safety) to ensure they are aware of a range of safeguarding issues. This training will be updated at least annually.

Online safety training for staff will be integrated, aligned, and considered as part of the whole school safeguarding approach and wider staff training and curriculum planning.

In addition to specific child protection training, all staff will receive regular safeguarding and child protection updates, at least annually, to provide them with relevant skills and knowledge to safeguard children effectively.

Stockport School recognises the expertise staff build by undertaking safeguarding training and from managing safeguarding concerns on a daily basis and staff are encouraged to contribute to and shape school safeguarding arrangements and child protection policies.

The DSL and/or Headteacher will provide an annual report to the governing body detailing safeguarding training undertaken by all staff and will maintain an up-to-date record of who has been trained

### OTHER RELATED POLICIES:

The school takes safeguarding seriously and understands this policy is over- arching. The school also maintains other linked policies in line with the legislative requirements; together these make up the suite of policies to safeguard and promote the welfare of children in this school:



- Attendance Policy
- Data Protection
- Staff Code of Conduct / Behaviour Policy
- Anti-bullying
- Drugs/substance abuse
- E-safety
- Inclusion
- Medical conditions
- Mobile phones
- Harassment at work/anti bullying
- Self-Harm
- SRE policy
- Young Carers
- Whistle blowing

## APPENDICES

### USEFUL LINKS, FURTHER ADVICE AND GUIDANCE:

#### Local Guidance & information

[Greater Manchester Safeguarding Procedures](#)- follow the link and search key words.

[Stockport Suicide Prevention](#)

[Stockport Early Help Assessment](#)

<https://www.stockport.gov.uk/team-around-the-school>

#### Professional Standards

[Teachers standard information.pdf](#)

[The-7-principles-of-public-life](#)

[National-standards-of-excellence-for-headteachers](#)

#### NSPCC 'Report Abuse in Education' Helpline

- [0800 136 663](tel:0800136663) or [help@nspcc.org.uk](mailto:help@nspcc.org.uk)

#### National Organisations

- NSPCC: [www.nspcc.org.uk](http://www.nspcc.org.uk)
- Barnardo's: [www.barnardos.org.uk](http://www.barnardos.org.uk)
- Action for Children: [www.actionforchildren.org.uk](http://www.actionforchildren.org.uk)
- Children's Society: [www.childrensociety.org.uk](http://www.childrensociety.org.uk)
- Centre of Expertise on Child Sexual Abuse: [www.csacentre.org.uk](http://www.csacentre.org.uk)

#### Support for Staff

- Education Support Partnership: [www.educationsupportpartnership.org.uk](http://www.educationsupportpartnership.org.uk)
- Professional Online Safety Helpline: [www.saferinternet.org.uk/helpline](http://www.saferinternet.org.uk/helpline)

- Harmful Sexual Behaviour Support Service: <https://swgfl.org.uk/harmful-sexual-behaviour-support-service>

### **Support for Students**

- ChildLine: [www.childline.org.uk](http://www.childline.org.uk)
- Papyrus: [www.papyrus-uk.org](http://www.papyrus-uk.org)
- The Mix: [www.themix.org.uk](http://www.themix.org.uk)
- Shout: [www.giveusashout.org](http://www.giveusashout.org)
- Fearless: [www.fearless.org](http://www.fearless.org)
- Victim Support: [www.victimsupport.org.uk](http://www.victimsupport.org.uk)

### **Support for Adults**

- Family Lives: [www.familylives.org.uk](http://www.familylives.org.uk)
- Crime Stoppers: [www.crimestoppers-uk.org](http://www.crimestoppers-uk.org)
- Victim Support: [www.victimsupport.org.uk](http://www.victimsupport.org.uk)
- The Samaritans: [www.samaritans.org](http://www.samaritans.org)
- NAPAC (National Association for People Abused in Childhood): [www.napac.org.uk](http://www.napac.org.uk)
- MOSAC: [www.mosac.org.uk](http://www.mosac.org.uk)
- Action Fraud: [www.actionfraud.police.uk](http://www.actionfraud.police.uk)
- Shout: [www.giveusashout.org](http://www.giveusashout.org)

### **Support for Learning Disabilities**

- Respond: [www.respond.org.uk](http://www.respond.org.uk)
- Mencap: [www.mencap.org.uk](http://www.mencap.org.uk)
- Council for Disabled Children: <https://councilfordisabledchildren.org.uk>

### **Contextual Safeguarding Network**

- <https://contextualsafeguarding.org.uk/>

### **Resilience Hub**

#### [Greater Manchester Resilience Hub](#)

### **Substance Misuse**

- MOSAIC-[MOSAIC Drug and Alcohol Services](#)
- Talk to Frank: [www.talktofrank.com](http://www.talktofrank.com)

### **Domestic Abuse**

- Domestic abuse services: [www.domesticabuseservices.org.uk](http://www.domesticabuseservices.org.uk)
- Refuge: [www.refuge.org.uk](http://www.refuge.org.uk)
- Women's Aid: [www.womensaid.org.uk](http://www.womensaid.org.uk)
- Men's Advice Line: [www.mensadvice.org.uk](http://www.mensadvice.org.uk)
- National Domestic Abuse Helpline: [www.nationaldahelpline.org.uk](http://www.nationaldahelpline.org.uk)
- Respect Phonenumber: <https://respectphonenumber.org.uk>

### **Criminal and Sexual Exploitation**

- National Crime Agency: [www.nationalcrimeagency.gov.uk/who-we-are](http://www.nationalcrimeagency.gov.uk/who-we-are)
- It's not okay: [www.itsnotokay.co.uk](http://www.itsnotokay.co.uk)
- NWG Network: [www.nwgnetwork.org](http://www.nwgnetwork.org)
- County Lines Toolkit for Professionals:  
[www.childrenssociety.org.uk/information/professionals/resources/county-lines-toolkit](http://www.childrenssociety.org.uk/information/professionals/resources/county-lines-toolkit)

### **Honour Based Abuse**

- Karma Nirvana: <https://karmanirvana.org.uk>
- Forced Marriage Unit: [www.gov.uk/guidance/forced-marriage](http://www.gov.uk/guidance/forced-marriage)
- FGM Factsheet:  
[https://assets.publishing.service.gov.uk/government/uploads/system/uploads/attachment\\_data/file/496415/6\\_1639\\_HO\\_SP\\_FGM\\_mandatory\\_reporting\\_Fact\\_sheet\\_Web.pdf](https://assets.publishing.service.gov.uk/government/uploads/system/uploads/attachment_data/file/496415/6_1639_HO_SP_FGM_mandatory_reporting_Fact_sheet_Web.pdf)
- Mandatory reporting of female genital mutilation: procedural information:  
[www.gov.uk/government/publications/mandatory-reporting-of-female-genital-mutilation-procedural-information](http://www.gov.uk/government/publications/mandatory-reporting-of-female-genital-mutilation-procedural-information)
- The right to choose - government guidance on forced marriage:  
[www.gov.uk/government/publications/the-right-to-choose-government-guidance-on-forced-marriage](http://www.gov.uk/government/publications/the-right-to-choose-government-guidance-on-forced-marriage)

## **Child-on-Child abuse, including bullying, sexual violence and harassment**

- Rape Crisis: <https://rapecrisis.org.uk>
- Brook: [www.brook.org.uk](http://www.brook.org.uk)
- Upskirting – know your rights: [www.gov.uk/government/news/upskirting-know-your-rights](http://www.gov.uk/government/news/upskirting-know-your-rights)
- Lucy Faithfull Foundation: [www.lucyfaithfull.org.uk](http://www.lucyfaithfull.org.uk)
- Stop it Now! [www.stopitnow.org.uk](http://www.stopitnow.org.uk)
- Parents Protect: [www.parentsprotect.co.uk](http://www.parentsprotect.co.uk)
- Anti-Bullying Alliance: [www.anti-bullyingalliance.org.uk](http://www.anti-bullyingalliance.org.uk)
- Diana Award: [www.antibullyingpro.com/](http://www.antibullyingpro.com/)
- Bullying UK: [www.bullying.co.uk](http://www.bullying.co.uk)
- Kidscape: [www.kidscape.org.uk](http://www.kidscape.org.uk)

## **Online Safety**

- NCA-CEOP: [www.ceop.police.uk](http://www.ceop.police.uk) and [www.thinkuknow.co.uk](http://www.thinkuknow.co.uk)
- Internet Watch Foundation (IWF): [www.iwf.org.uk](http://www.iwf.org.uk)
- Childnet: [www.childnet.com](http://www.childnet.com)
- UK Safer Internet Centre: [www.saferinternet.org.uk](http://www.saferinternet.org.uk)
- Report Harmful Content: <https://reportharmfulcontent.com>
- Marie Collins Foundation: [www.mariecollinsfoundation.org.uk](http://www.mariecollinsfoundation.org.uk)
- Internet Matters: [www.internetmatters.org](http://www.internetmatters.org)
- NSPCC: [www.nspcc.org.uk/onlinesafety](http://www.nspcc.org.uk/onlinesafety)
- Get Safe Online: [www.getsafeonline.org](http://www.getsafeonline.org)
- Parents Protect: [www.parentsprotect.co.uk](http://www.parentsprotect.co.uk)
- Cyber Choices: <https://nationalcrimeagency.gov.uk/what-we-do/crime-threats/cyber-crime/cyberchoices>
- National Cyber Security Centre (NCSC): [www.ncsc.gov.uk](http://www.ncsc.gov.uk)

## **Mental Health & Emotional Wellbeing**

- Mind: [www.mind.org.uk](http://www.mind.org.uk)
- Kooth- <https://www.kooth.com/>
- Moodspark: <https://moodspark.org.uk>
- Young Minds: [www.youngminds.org.uk](http://www.youngminds.org.uk)
- Anna Freud: [www.annafreud.org/schools-and-colleges/](http://www.annafreud.org/schools-and-colleges/) Stockport

### **Radicalisation and hate**

- Educate against Hate: [www.educateagainsthate.com](http://www.educateagainsthate.com)
- Stop Hate UK- <https://www.stophateuk.org/>
- Counter Terrorism Internet Referral Unit: [www.gov.uk/report-terrorism](http://www.gov.uk/report-terrorism)
- True Vision: [www.report-it.org.uk](http://www.report-it.org.uk)

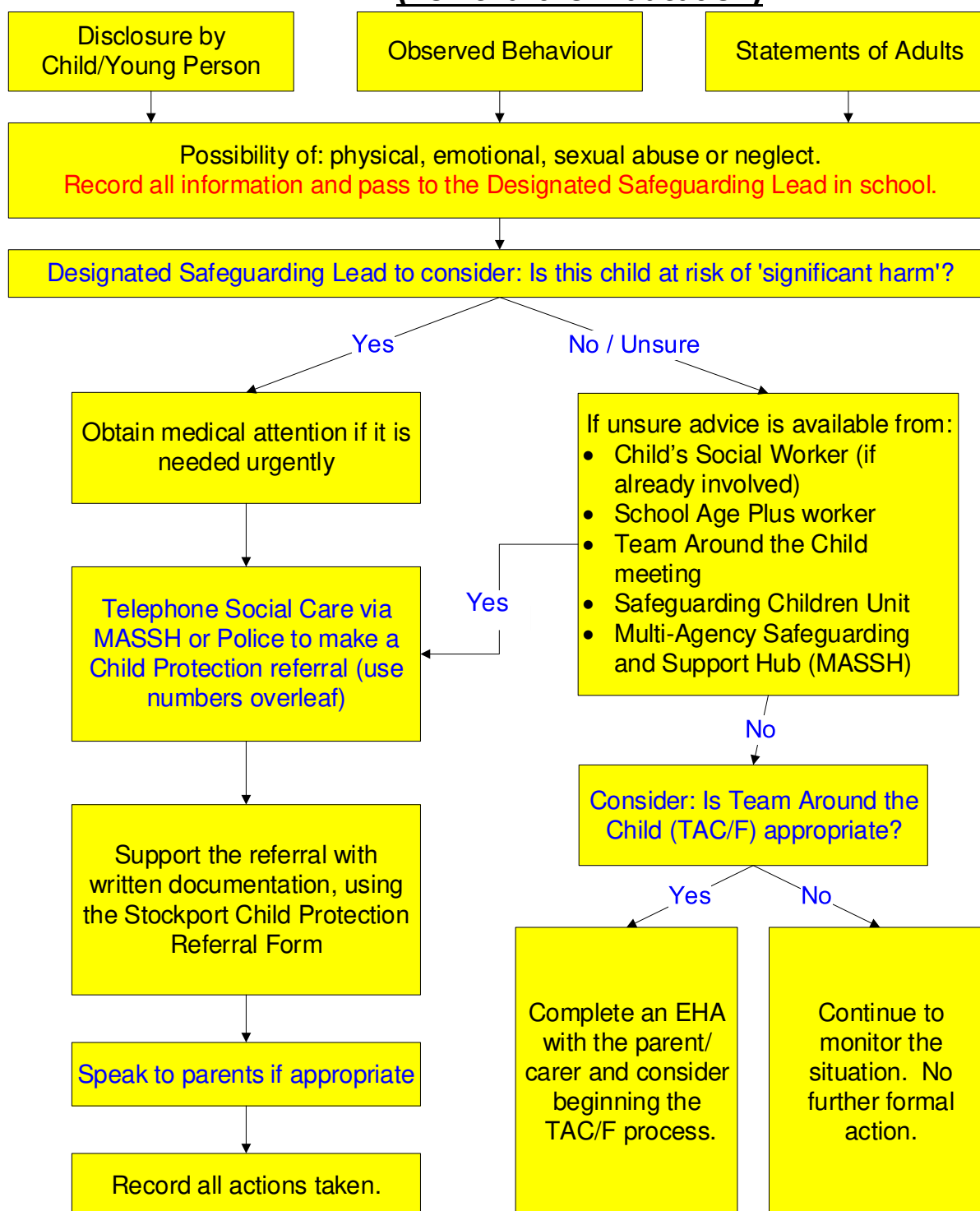
### **Children with Family Members in Prison**

- National information Centre on Children of Offenders (NICCO): <https://www.nicco.org.uk/>

### **Children in the court system**

- Children are sometimes required to give evidence in criminal courts, either for crimes committed against them or for crimes they have witnessed. There are two age appropriate guides to support children [5-11 year olds](#) and [12-17 year olds](#).
- Making child arrangements via the family courts following separation can be stressful and entrench conflict in families. This can be stressful for children. The Ministry of Justice has launched an online [child arrangements tool](#) | with clear and concise information on the dispute resolution service. This may be useful for some parents and carers.

## What to do if you are concerned that a child/young person is being abused (flowchart for Education)



**REMEMBER:** It is not the role of Education to investigate a Child Protection concern. Report the information you have and Social Care and/or the Police will investigate.

## POSSIBLE INDICATORS OF ABUSE:

Indicators are provided as a guide, concerns and context should be discussed with the DSL

### Sexual

- Genital discomfort, pain, itching, bruising, injuries
- Public /compulsive masturbation
- Eating disorders
- Sexually explicit behaviour or language not age
- Sexually Transmitted Infection
- Sexually explicit drawings
- Pregnancy

### Physical

- Bruises, black eyes and broken bones
- Unexplained or untreated injuries
- Injuries to unusual body parts e.g. thighs, back, abdomen
- Bruising that resembles hand/finger marks
- Burns/scalds
- Human bites/cigarette burns
- Injuries that the child cannot explain or explains unconvincingly
- Injuries in babies and non-mobile children

### Behaviour

- Change in general behaviour
  - Low self-esteem
- Extremely passive/aggressive
  - Sleeping difficulties
  - Eating disorder
  - Lethargy/tiredness
  - Fear of certain adults
- Poor social relationships
- Bullying/anti-social behaviours
- School attendance difficulties
  - Disclosure
  - Self-harm

### Neglect

- Inappropriately dressed
- Undernourished/always hungry
- Untreated medical problems e.g. dental decay, head lice etc.
- Lethargy, tiredness or aggressive tendencies
- Lack of basic needs being met- food, shelter warmth etc.

### Emotional

- Physical, mental & emotional development lags
- Talks of excessive punishment
- Fear of parents being contacted
- Sudden speech disorders
- Running away
- Self-deprecation, low self esteem

Online Abuse

Contextual Safeguarding



## INFORMATION YOU MAY BE ASKED TO PROVIDE

When you make a referral to Social Care (Children's Services) or to the police, you should provide as much of the following information as possible:

- **Child's name, date of birth, address, telephone number and ethnic origin;**
- **Family details** - who lives in the home - and any other significant adults;
- What is causing concern and the **evidence** that you have gathered to support your concerns;
- Any **additional needs** the child and/or family may have including language, disability and communication;
- Clarification of discussion with any family members if a discussion has been appropriate;
- Clarification of any ongoing assistance that you are giving to the family;
- Your name, workplace and contact telephone number.

All Child Protection referral phone calls made to the Multi-Agency Safeguarding & Support Hub (MASSH) to secure a response from Social Care must be supported with written documentation. In Stockport this is through the online Child Protection Referral form.

**Remember- Anyone in school can make a child protection referral**

## INFORMATION & TELEPHONE NUMBERS FOR CONSULTATION AND REFERRAL

---

Children's Services- child protection referral

- Online (to the MASSH)- <https://www.stockport.gov.uk/contacting-the-massh>
- The Multi –agency Safeguarding and Support Hub (MASSH) - Monday to Thursday 8.30am to 5.00pm, Friday 8.30am to 4.30pm. Tel. (0161) 217-6028 or 6024.  
Out of hours referrals and advice Tel: (0161) 718-2118
- Greater Manchester Police Tel: 101 or go online for non-urgent matters, dial 999 in an emergency

Advice is available from:

- Child's Social Worker (if already involved)
- Named School Social Worker
- School Age Plus worker
- Team Around the School meeting
- Safeguarding Children Unit tel. (0161) 474-5657

## The LADO:

### [Greater Manchester procedures online- Allegation management](#)

The process of managing allegations starts where information comes to the attention of a manager which suggests that an adult working with children may have:

- Behaved in a way that has harmed a child, or may have harmed a child;
- Possibly committed a criminal offence against or related to a child; or
- Behaved towards a child or children in a way that indicates he/she may pose a risk of harm to children.

Concerns or allegations about the behaviour of an adult may be brought to the attention of a manager in a variety of ways. For example:

- An allegation made directly by a child or parent;
- An allegation made by a colleague or member of staff;
- Information from police or local authority social care team;
- Information from a third party or the general public;
- Information disclosed anonymously or online; or
- Concerns generated through an employment relationship.

The procedures allow for consideration of the adult's behaviour at the earliest opportunity when a concern or allegation arises and is brought to the manager/employer's attention.

### **When to contact the Local Authority Designated Officer (LADO)**

It is important to ensure that even apparently less serious allegations are seen to be followed up, and that they are examined objectively by someone independent of the organisation concerned.

Discussion should always take place between the employer and the LADO when the concern or allegation meets the criteria.

Some examples of this may be where an individual has:

- Contravened or has continued to contravene any safe practice guidance given by his/her organisation or regulatory body;
- Exploited or abused a position of power;
- Acted in an irresponsible manner which any reasonable person would find alarming or questionable given the nature of work undertaken;
- Demonstrated a failure to understand or appreciate how his or her own actions or those of others could adversely impact upon the safety and well-being of a child;
- Demonstrated an inability to make sound professional judgements which safeguard the welfare of children;
- Failed to follow adequately policy or procedures relating to safeguarding and promoting the welfare of children;
- Failed to understand or recognise the need for clear personal and professional boundaries in his or her work;
- Behaved in a way in her or her personal life which could put children at risk of harm;
- Become the subject of criminal proceedings not relating to a child;

- Become subject to enquiries under local child protection procedures and/or child subject to **Child Protection Plan**;
- Behaved in a way which seriously undermines the trust and confidence placed in him or her by the employer.

**Colleagues with concerns can contact the LADO on 0161 474 5657.**